

CHX

OCTOBER 2013

DESIGN • SPACES • ARCHITECTURE • ART • LIFESTYLE



BEAUTIFULLY BALANCED

BEAUTY IN NATURE
Public And Personal Spaces
Converge Under One Roof

ULTRA CHIC
Feel Right At Home At
The Classy Bruneblonde

“
With an interesting
cutaway corner as
well as all wooden
exterior, the Ofuna
house draws many
second looks.”



perfect balance

words_jade ang photos_makoto yoshida art_boon ting ting



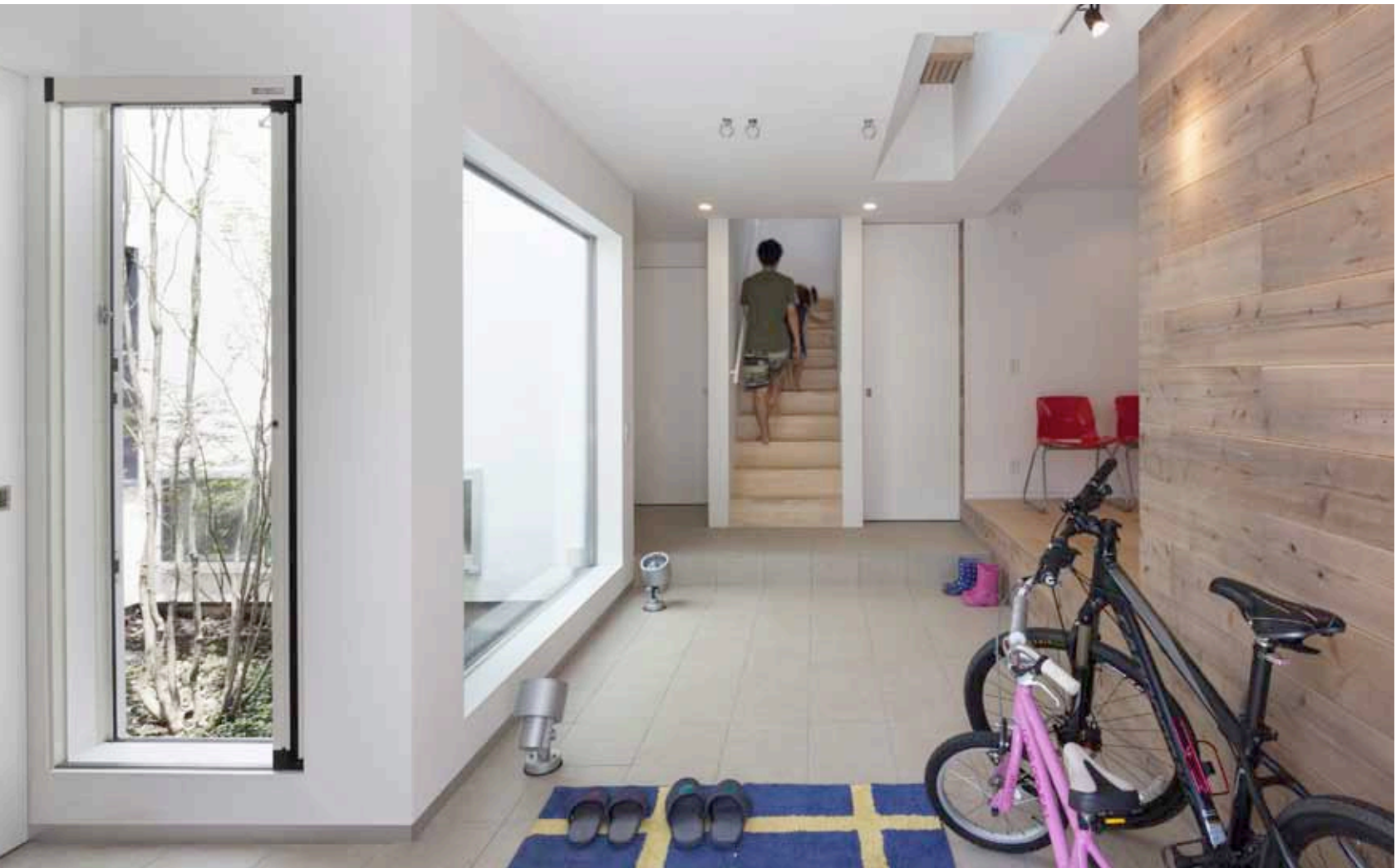
While it is difficult to strike a balance between the needs of all the occupants of a home, Level Architects has managed to do just that with the Ofuna house.

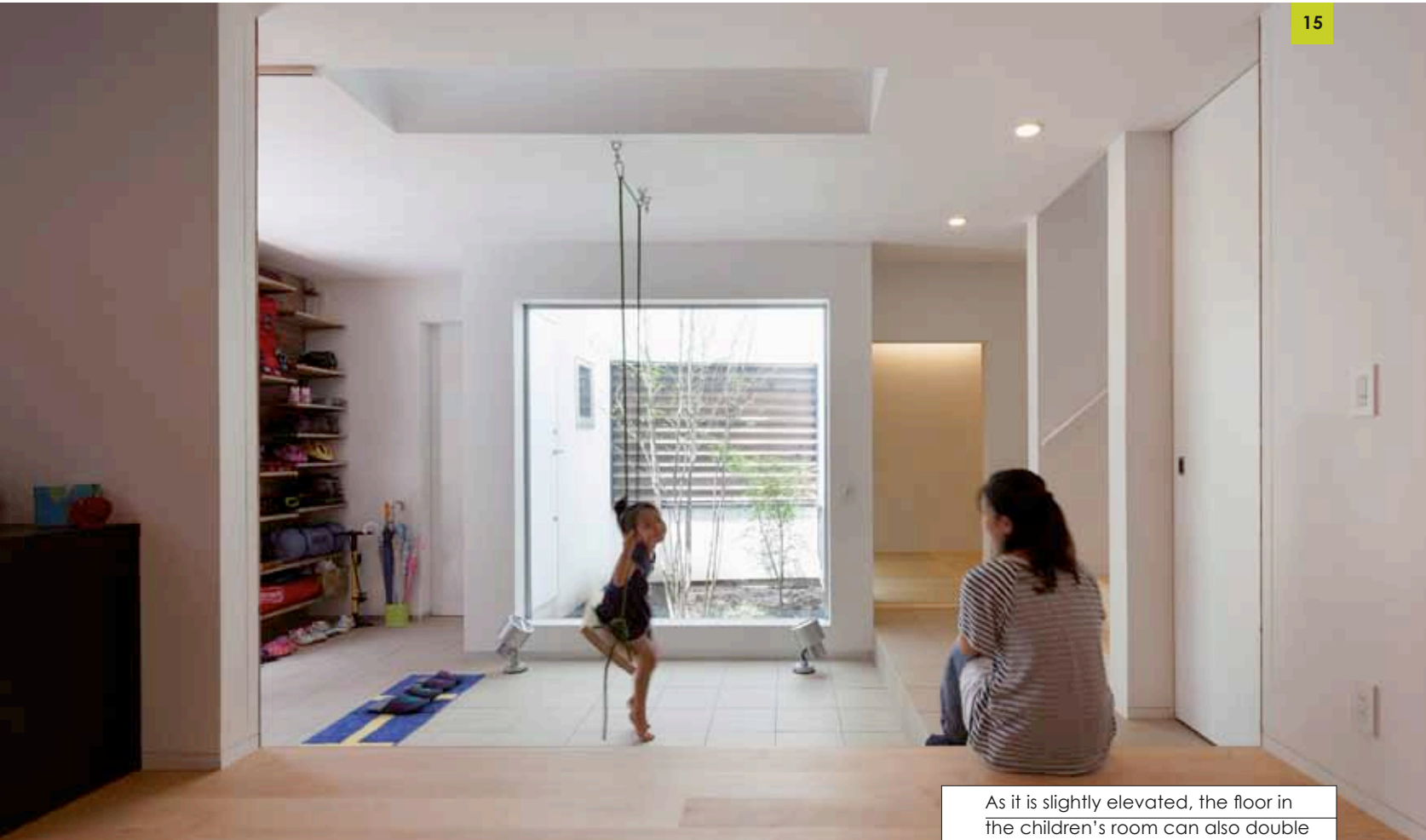
“
The house is built
around a symbolic tree
in the inner garden.”

In Japan, most neighbourhoods have a sense of uniformity as the houses are all designed in a similar fashion. Every once in a while, there will be that one house which stands out among the rest with its unique architecture and the Ofuna house is that particular one in this neighbourhood.

Instead of atypical structure, the Ofuna house sports a cutaway corner which offers its inhabitants a direct view of some hills west of the house while still retaining privacy from the street below. Other than its unique architecture, the house also stands out distinctively due to its wooden exterior as opposed to concrete like the rest of the neighbourhood.

Built around an inner garden in the center, almost every space in the house from the terrace to the inner terrace and bedrooms all revolve around it. In the children's bedroom, space is cleverly layered to create different opportunities for the children's room. As it is adjacent to the inner terrace; the floor level can also be utilized as a bench, allowing multiple uses to the open space.



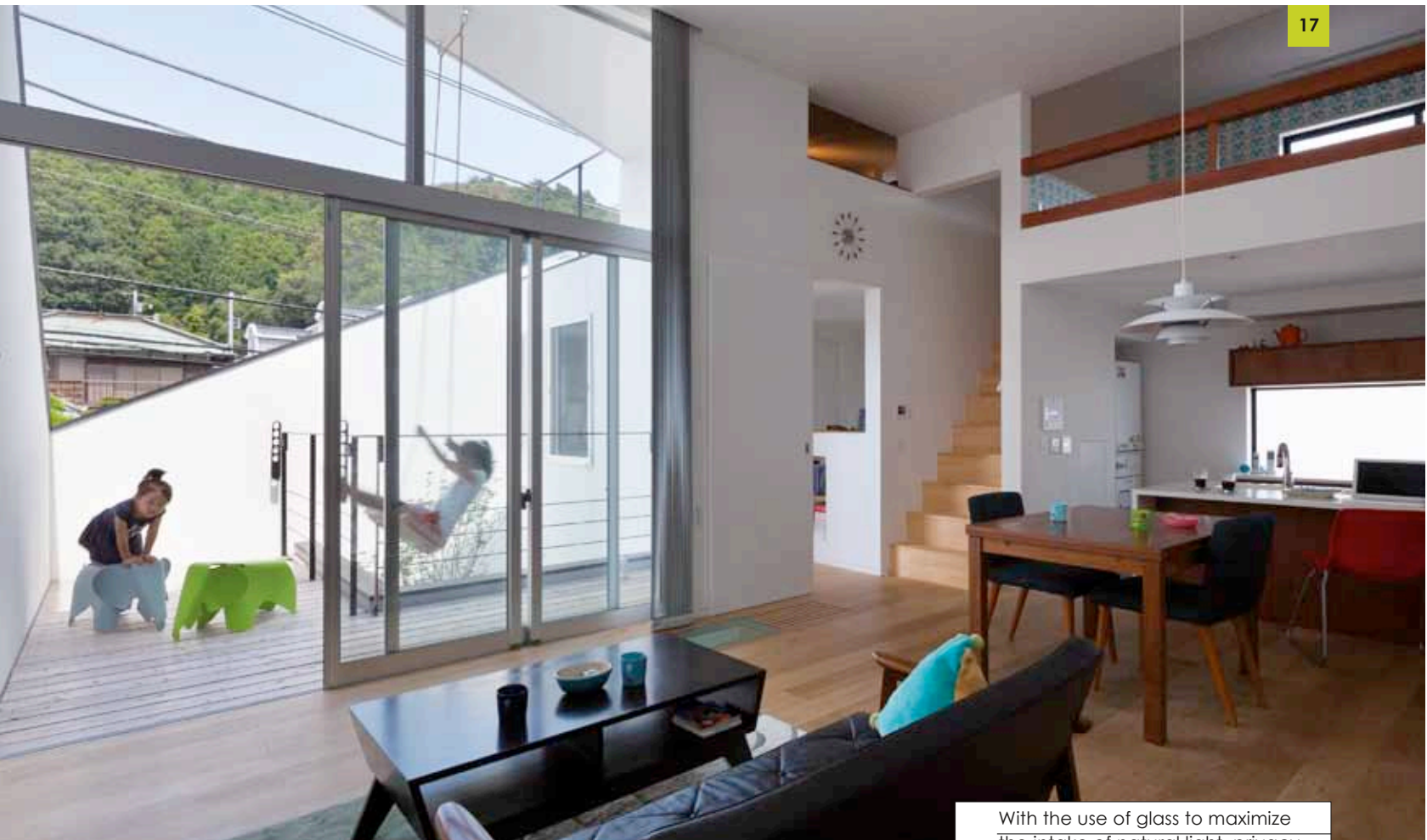


As it is slightly elevated, the floor in the children's room can also double up as a bench for play time.

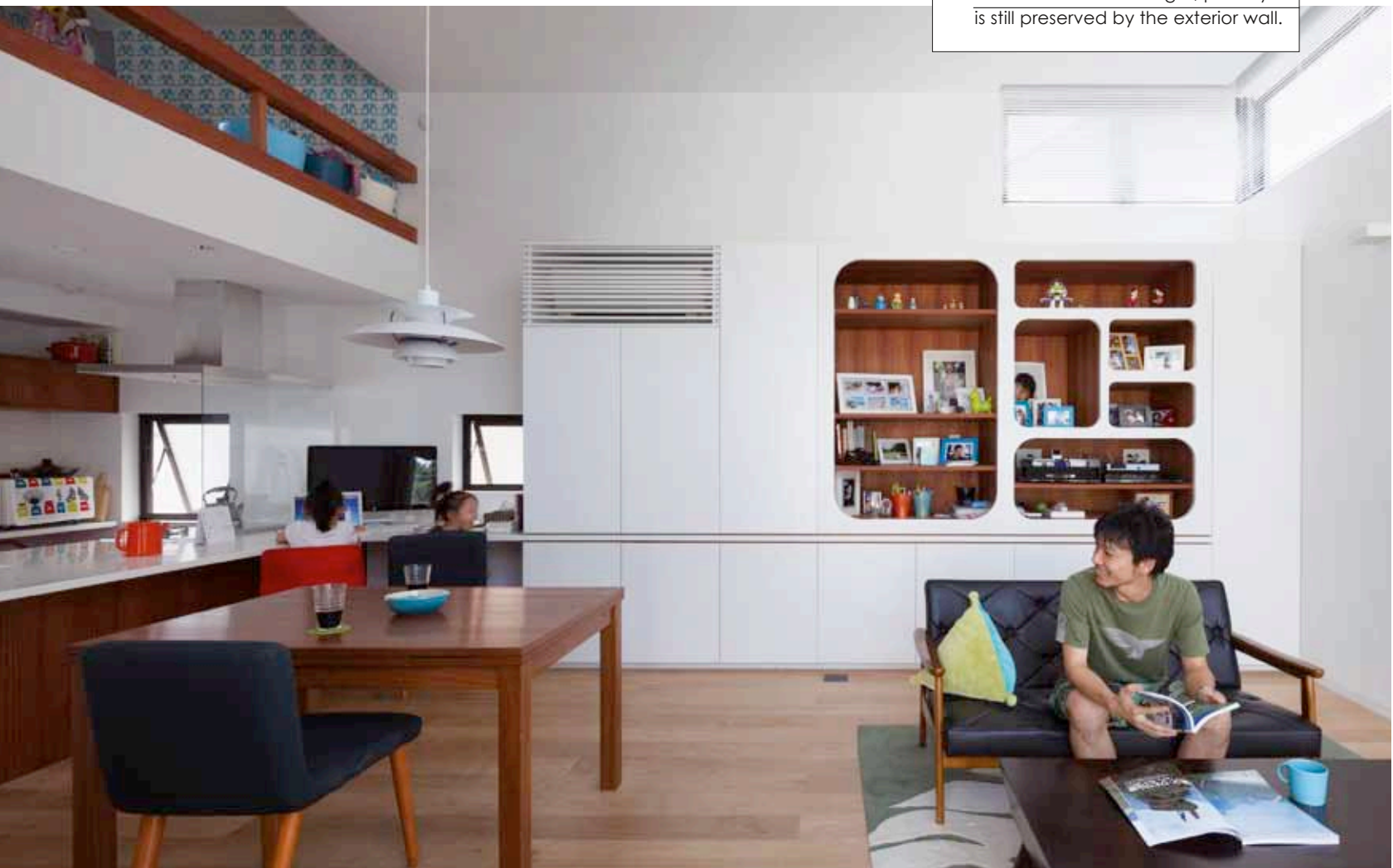




Secluded while still being open at the same time, the balcony serves as a great playground for the kids.



With the use of glass to maximize the intake of natural light, privacy is still preserved by the exterior wall.





The loft above the living room serves as the children's private enclave within the house.

The inner terrace also doubles up as a spacious entrance hall, allowing plenty of extra storage to be built along the extensive walls. Upstairs on the second floor, the living, and dining and kitchen area enjoy an extravagant ceiling height of more than 3.5 meters. Looking out the balcony, the occupants are able to see the beautiful hills beyond which are framed by the triangular cutaway corner.

Not forgetting about the little ones, the designers managed to implement quite a few elements with the children in mind such as the loft above the living room which serves as a small play space as well as the swings in the children's bedroom and terrace. Level Architects has managed to strike a balance between the needs of both the adult as well as children.

www.level-architects.com





“Built surrounding the inner garden, the entire house is connected.”